

Notice to recyclers regarding clamps' PVC coating

When recycling the following Mitsubishi Electric models of our cooling and heating products manufactured in Japan or United Kingdom between July 2019 and November 2020 please first remove the clamps' PVC coating which are contaminated with DEHP and dispose of this in an environmentally safe way.

For the concerned models please see list below.

•What is a clamp:

See image. This is used to hold cables together in outdoor and indoor units.

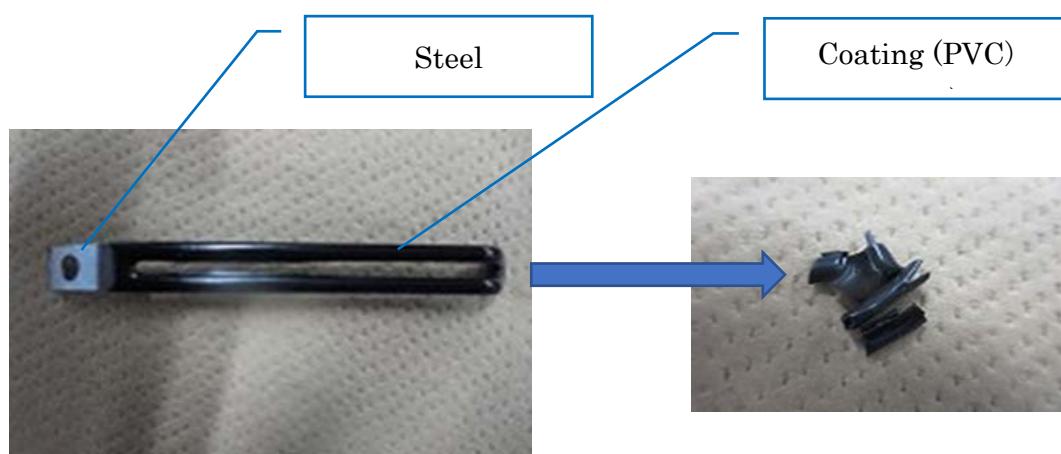


Fig-1 Clamp

Fig-2 PVC resin tested and DEHP detected

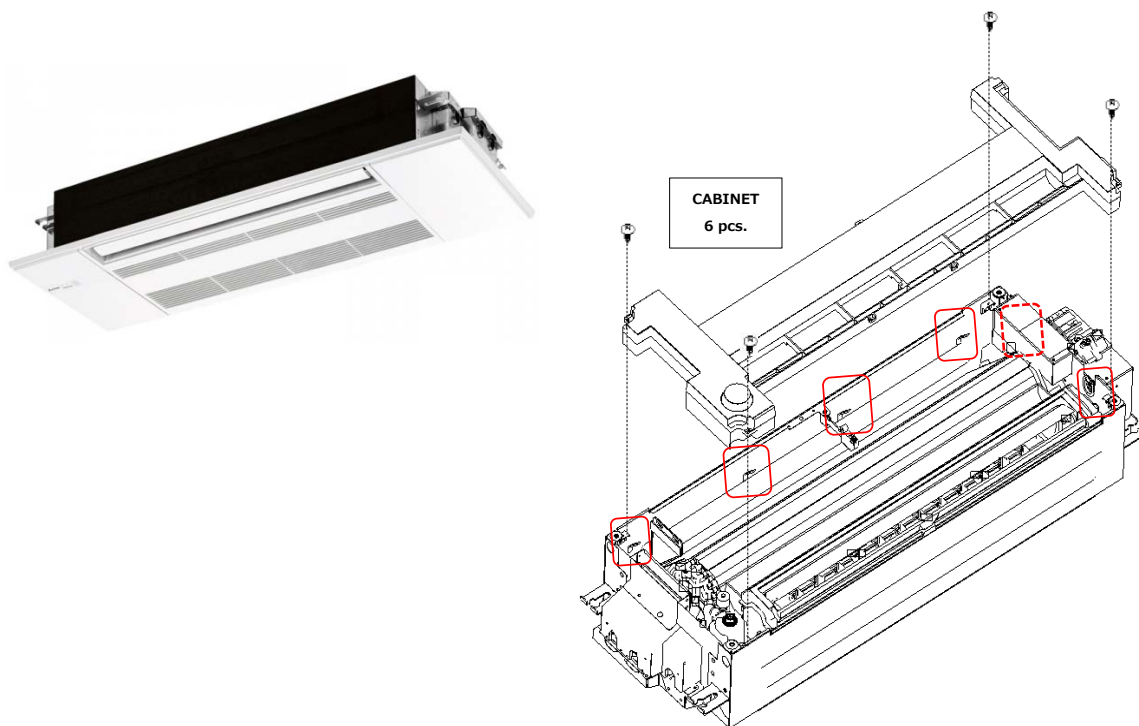
•Concerned models:

The target is the following series, but please see the attachment for individual serial number information.

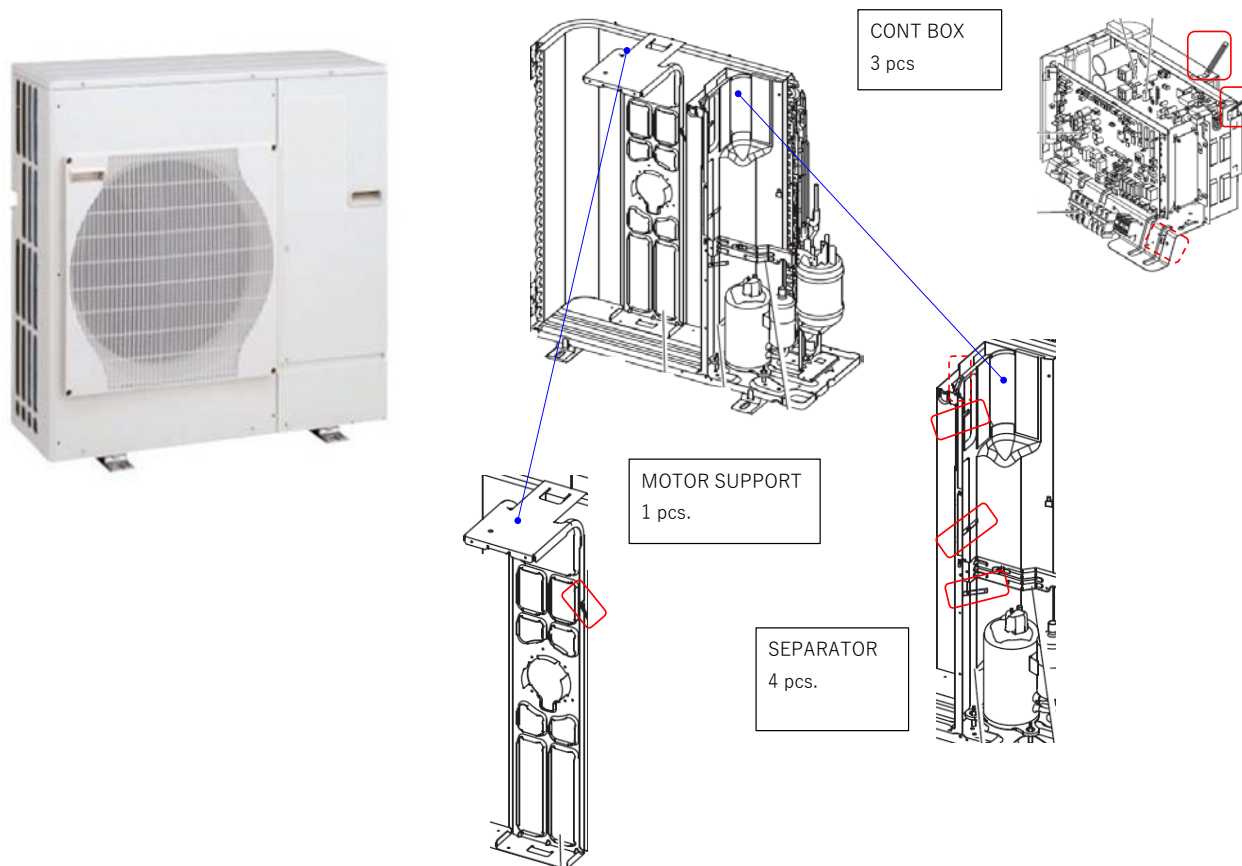
Category	Series
RAC	MLZ
Mr. Slim	PLA, PKA, PCA, PUZ, PUHZ
City Multi	PLFY, PCFY, PKFY, PFFY, PMFY, PUHY, PUMY, PURY, PQRY, PUHY-M, PUHY-EM, PURY, PQHY, PQRY, (Optional Parts) CMB-WM
Air to Water	(Outdoor Unit) PUHZ, PUZ, PUD, QUHZ (Indoor) EHGT, EHST, ERST, EHPT, ERPT, EHSC/D/E, ERSC/D/E, EHPX, ERPX
Chillers	CAHV, CRHV, QAHV, (Optional Parts) AM-01A

●Where clamps located:

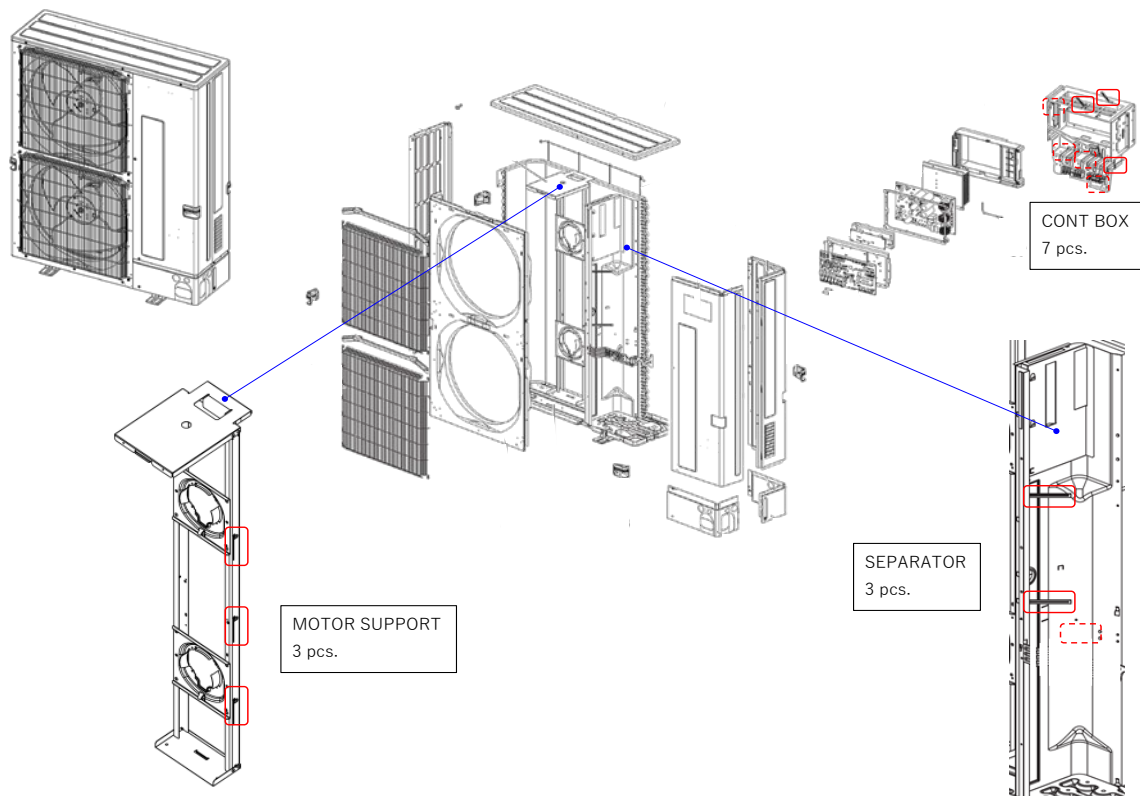
RAC Indoor unit (MLZ)



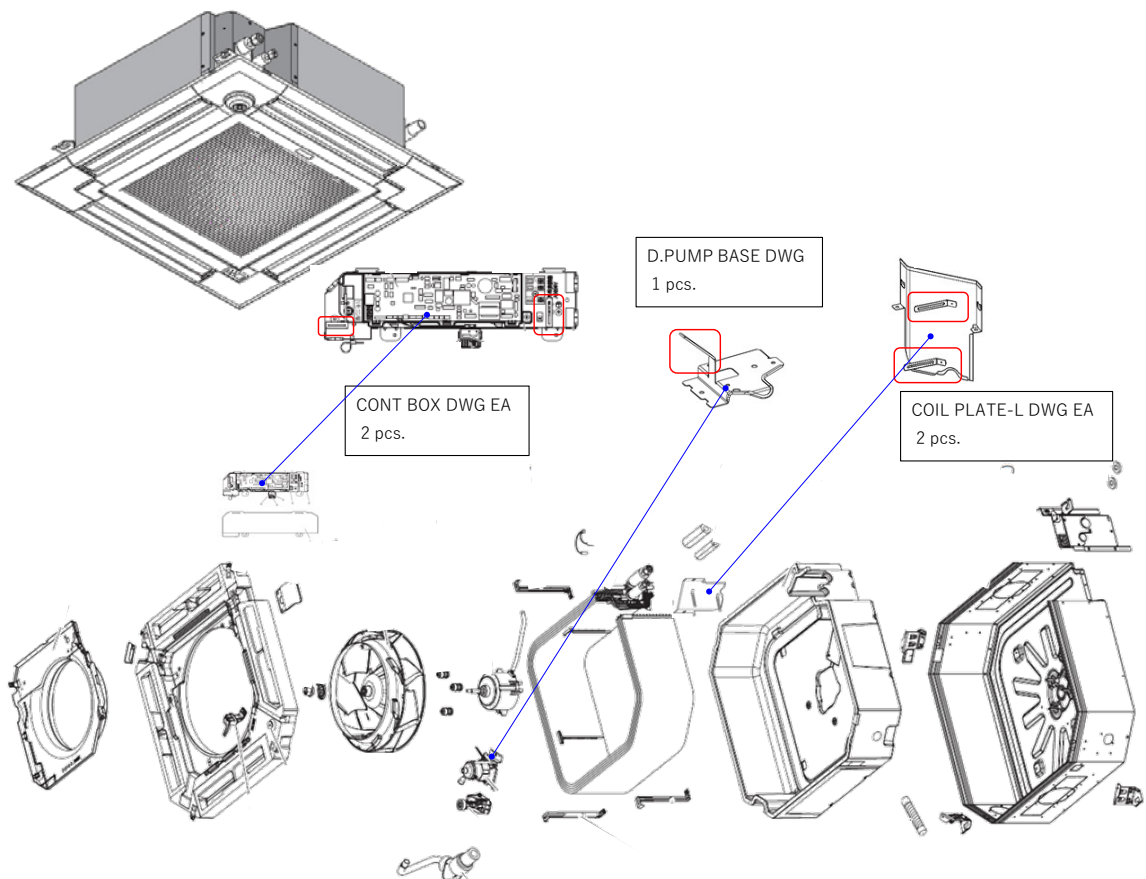
Mr. Slim / Air to Water Outdoor unit (PUZ/PUHZ/PUD)



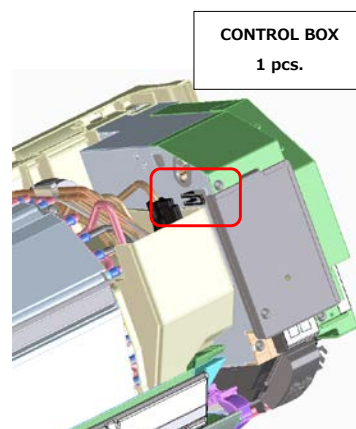
Mr. Slim / City Multi Outdoor unit (PUZ/PUHZ/PUMY)



Mr. Slim / City Multi Indoor unit (PLA/PLFY)

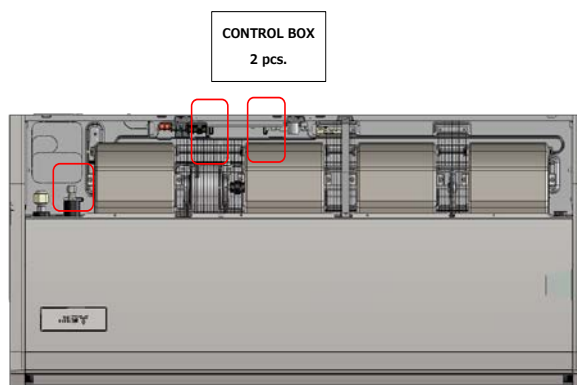


Mr. Slim / City Multi Indoor unit (PKA/PKFY)



CONTROL BOX
1 pcs.

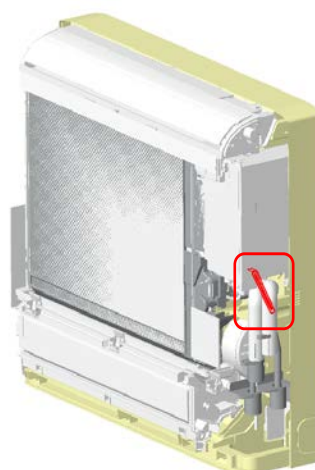
Mr. Slim / City Multi Indoor unit (PCA/PCFY)



CONTROL BOX
2 pcs.

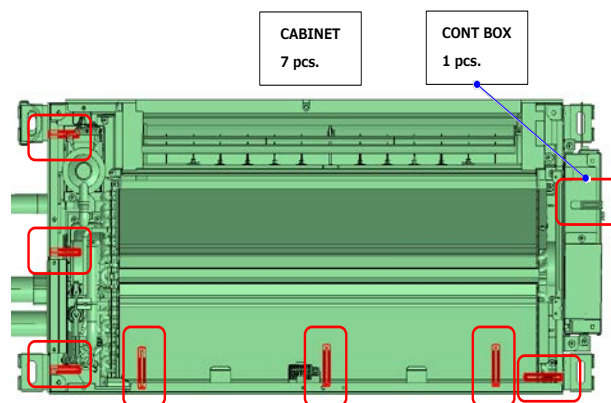
CABINET
1 pcs.

City Multi Floor standing Indoor unit (PFFY)



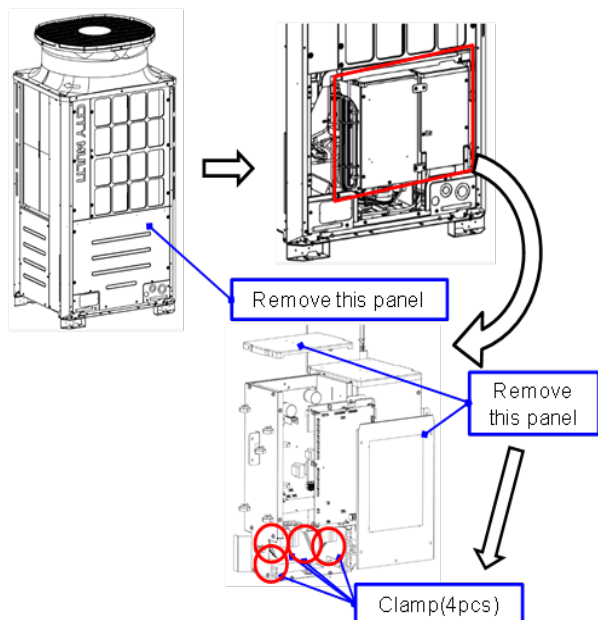
ELECT BOX
1 pcs.

City Multi Indoor unit (PMFY)

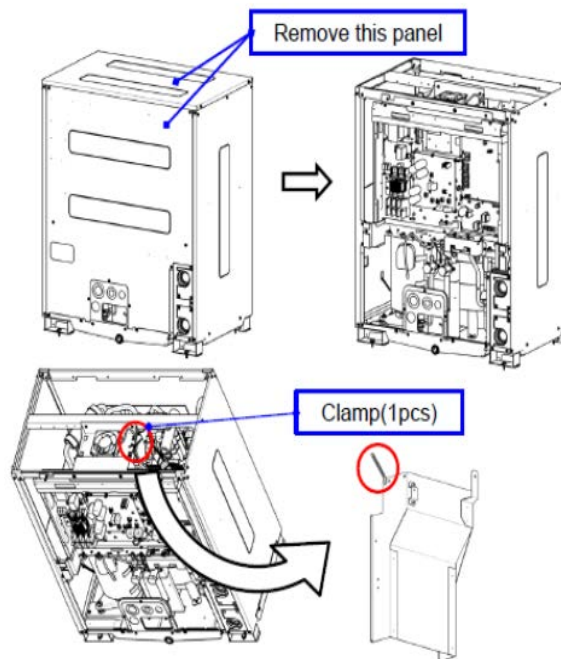


VRF Outdoor and Heat Source Unit

VRF Outdoor unit (PUHY/PURY) 4 pcs.

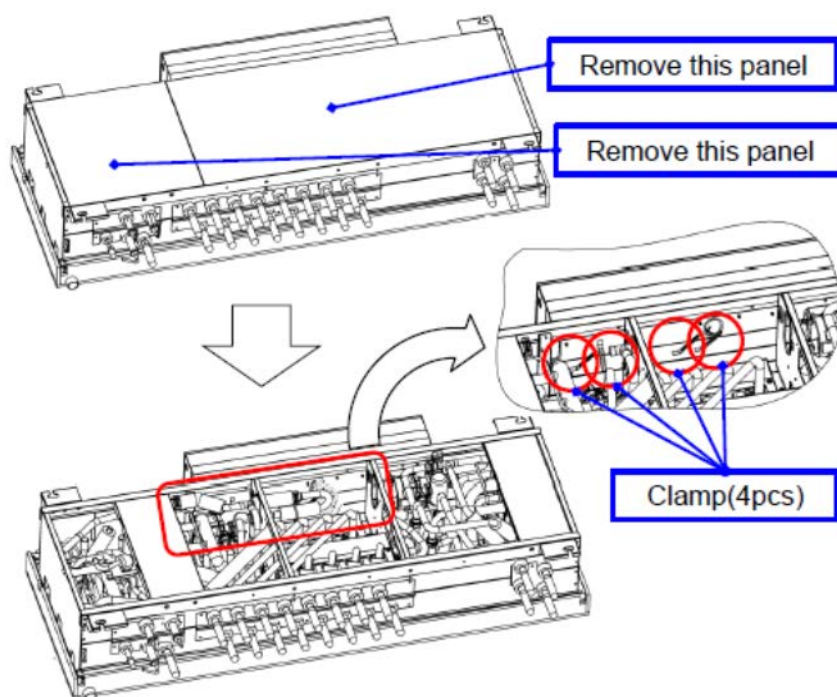


VRF Heat source unit (PQRY / PQHY) 1 pcs.



VRF Indoor Unit

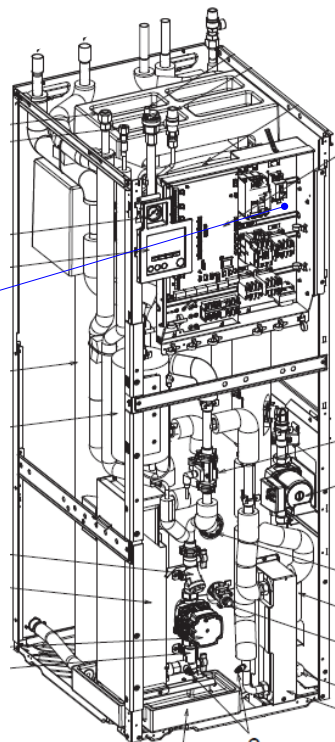
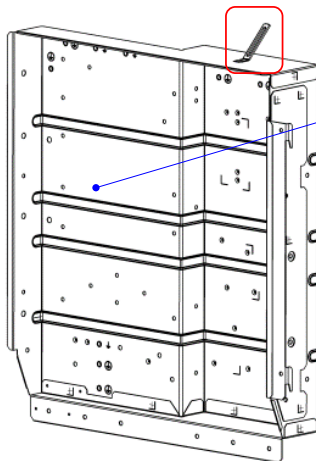
VRF Indoor unit (CMB-WP/CMB-WM) 4 pcs.



Air to Water Indoor unit (EHST/ERST/EHPT/ERPT,)



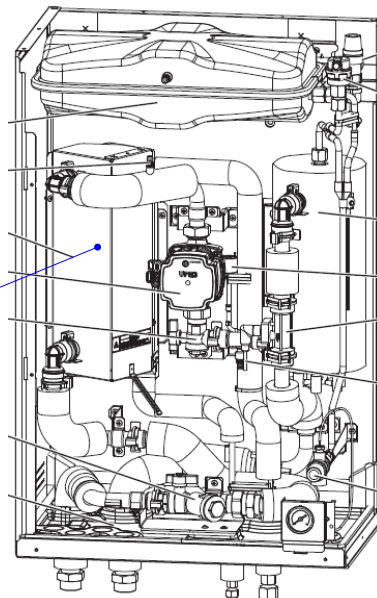
CONTROL BOX DWG
Clamp : 1 pcs.



Air to Water Indoor unit (EHSD/ERSD/EHPX/ERPX)

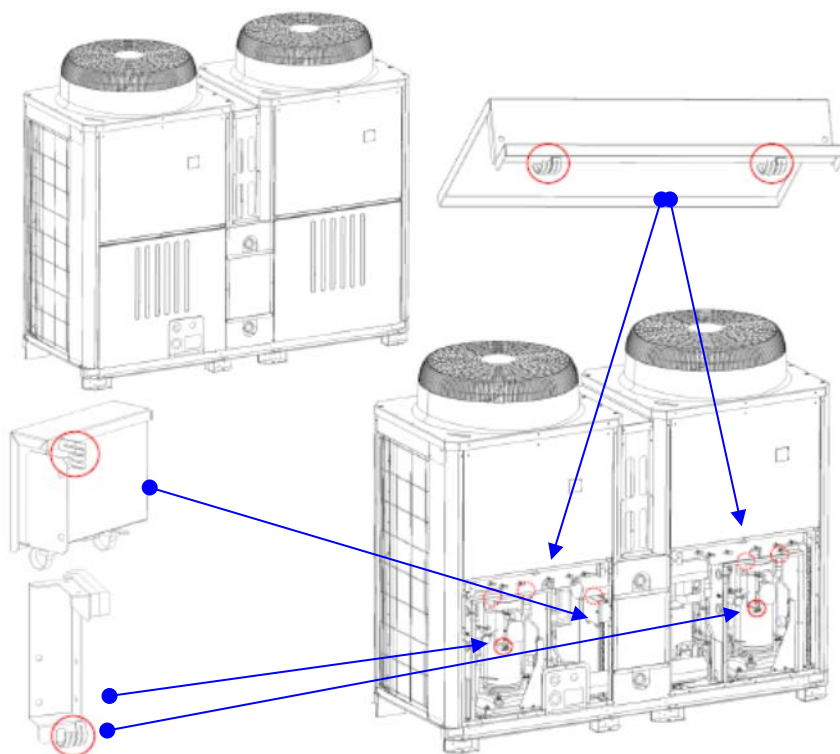


W.COIL_COVER_DWG
Clamp: 1 pcs.

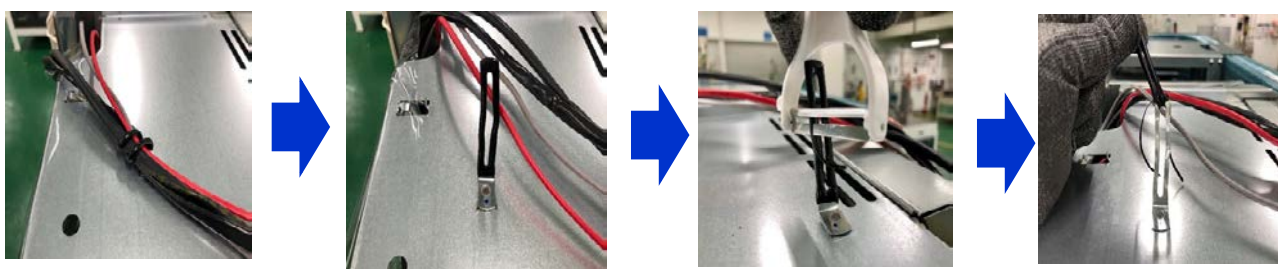


Chillers Outdoor unit

ATW Outdoor unit (CAHV+AM-01) 6+1 pcs.



●How to recycle PVC coating



- A) Open the units
- B) Unfasten Clamp
- C) Peel PVC coating
- D) Incineration PVC

●For the further information, please feel free to contact to:

clampcoating@meg.mee.com