

MITSUBISHI ELECTRIC CORPORATION
PUBLIC RELATIONS DIVISION
7-3, Marunouchi 2-chome, Chiyoda-ku, Tokyo, 100-8310 Japan

FOR IMMEDIATE RELEASE

No. 3256

Customer Inquiries

Media Inquiries

Advanced Technology R&D Center
Mitsubishi Electric Corporation
www.MitsubishiElectric.com/ssl/contact/company/rd/form.html
www.MitsubishiElectric.com/company/rd/

Public Relations Division
Mitsubishi Electric Corporation
prd.gnews@nk.MitsubishiElectric.co.jp
www.MitsubishiElectric.com/news/

Mitsubishi Electric Develops Super Compact Power Unit and High Power Density Electric Machine for Hybrid Electric Vehicle

Will expand vehicle cabin space while improving fuel efficiency for hybrid electric vehicles

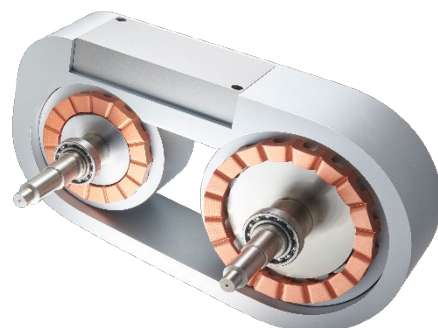
TOKYO, February 13, 2019 – [Mitsubishi Electric Corporation](http://www.mitsubishi-electric.com) (TOKYO: 6503) announced today that it has developed what is believed to be the world's smallest¹ power unit for a two-motor hybrid electric vehicle (two inverters and one converter), measuring just 2.7 liters in volume, offering a world-leading 150 kVA/L power density. The motor also boasts top-class² output-power density of 23 kW/L. Featuring an all-silicon-carbide (SiC) power semiconductor module, high-density packaging technology and an asymmetric rotor structure, Mitsubishi Electric's new power unit and motor will help to improve fuel efficiency while enabling flexible installations and more space for vehicle cabins.

¹ According to Mitsubishi Electric research as of February 13, 2019, a power unit with two inverters and one converter for two-motor HEVs

² According to Mitsubishi Electric research as of February 13, 2019, driving motors for two-motor HEVs under the same conditions



Super-compact power unit for HEVs
(newly developed)



High-power-density electric machine for HEVs
(newly developed)

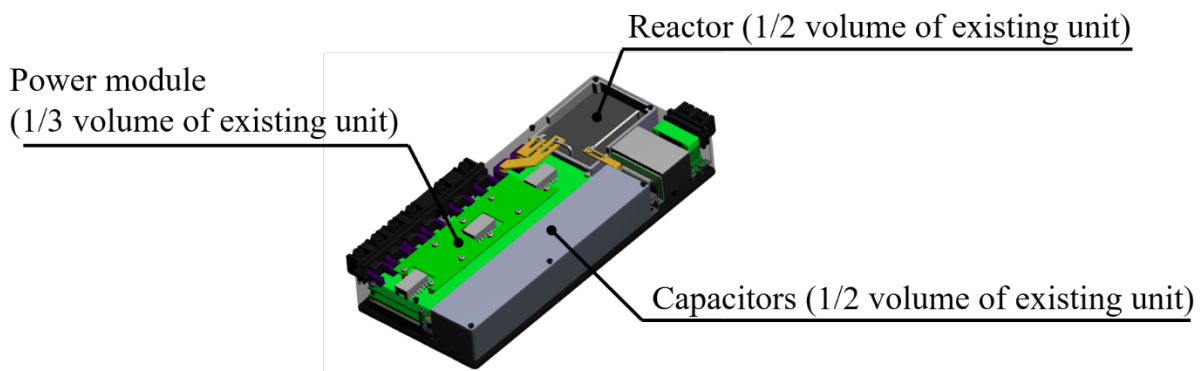
Key Features

1) *World's smallest volume (2.7 L) and world's top power density (150 kVA/L) power unit for HEVs*

The power unit consists of three main components: power module, reactor and capacitors. Mitsubishi Electric improved both the circuit structure and the high-density mounting of the control circuit board to which the insulating coating is applied, thereby reducing the volume of the power module, including the control circuit board, to 1/3 the size of the company's existing power unit³. By driving the converter with an SiC power device that achieves small switching loss⁴ at high frequency, the total volume of the reactor and capacitors (passive components) was reduced to 1/2 that of the company's existing power unit. Also, it features an excellent heat-dissipation structure that efficiently transfers heat loss to the cooling system.

³ SiC inverter of same output (announced in news release on March 9, 2017)

⁴ Power loss due to heat generated by opening/closing electrical circuit switches



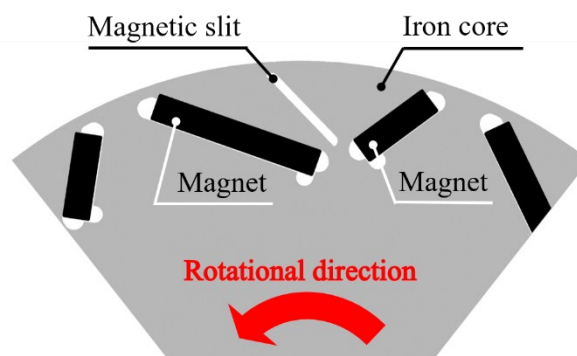
Newly downsized power unit

2) *Top-class 23kW/L output power density achieved in high-torque concentrated-winding motor⁵*

A newly developed asymmetric rotor structure and concentrated-winding enable Mitsubishi Electric's new motor to offer top-class output-power density. Considering that most of the motor's energy is used for driving the vehicle forward, not backward, an asymmetric rotor was developed to preferentially increase forward-direction rotational torque. Also, output-power density was greatly enhanced by installing a novel magnetic slit in the iron core of the concentrated-winding motor, which is basically weaker than a distributed-winding motor⁶. In addition, a high-efficiency oil cooling structure with an oil-water heat exchanger enables the use of extra-strong magnets, which conventionally are not suited to high temperatures.

⁵ A winding structure in which coils are wound around one tooth of a stator core

⁶ A winding structure in which coils are wound around multiple teeth of a stator core



Asymmetric rotor structure of high-power-density motor

Patents

Pending patents for newly developed technologies announced in this news release number 41 in Japan and 29 outside of Japan.

###

About Mitsubishi Electric Corporation

With nearly 100 years of experience in providing reliable, high-quality products, Mitsubishi Electric Corporation (TOKYO: 6503) is a recognized world leader in the manufacture, marketing and sales of electrical and electronic equipment used in information processing and communications, space development and satellite communications, consumer electronics, industrial technology, energy, transportation and building equipment. Embracing the spirit of its corporate statement, Changes for the Better, and its environmental statement, Eco Changes, Mitsubishi Electric endeavors to be a global, leading green company, enriching society with technology. The company recorded consolidated group sales of 4,444.4 billion yen (in accordance with IFRS; US\$ 41.9 billion*) in the fiscal year ended March 31, 2018. For more information visit:

www.MitsubishiElectric.com

*At an exchange rate of 106 yen to the US dollar, the rate given by the Tokyo Foreign Exchange Market on March 31, 2018